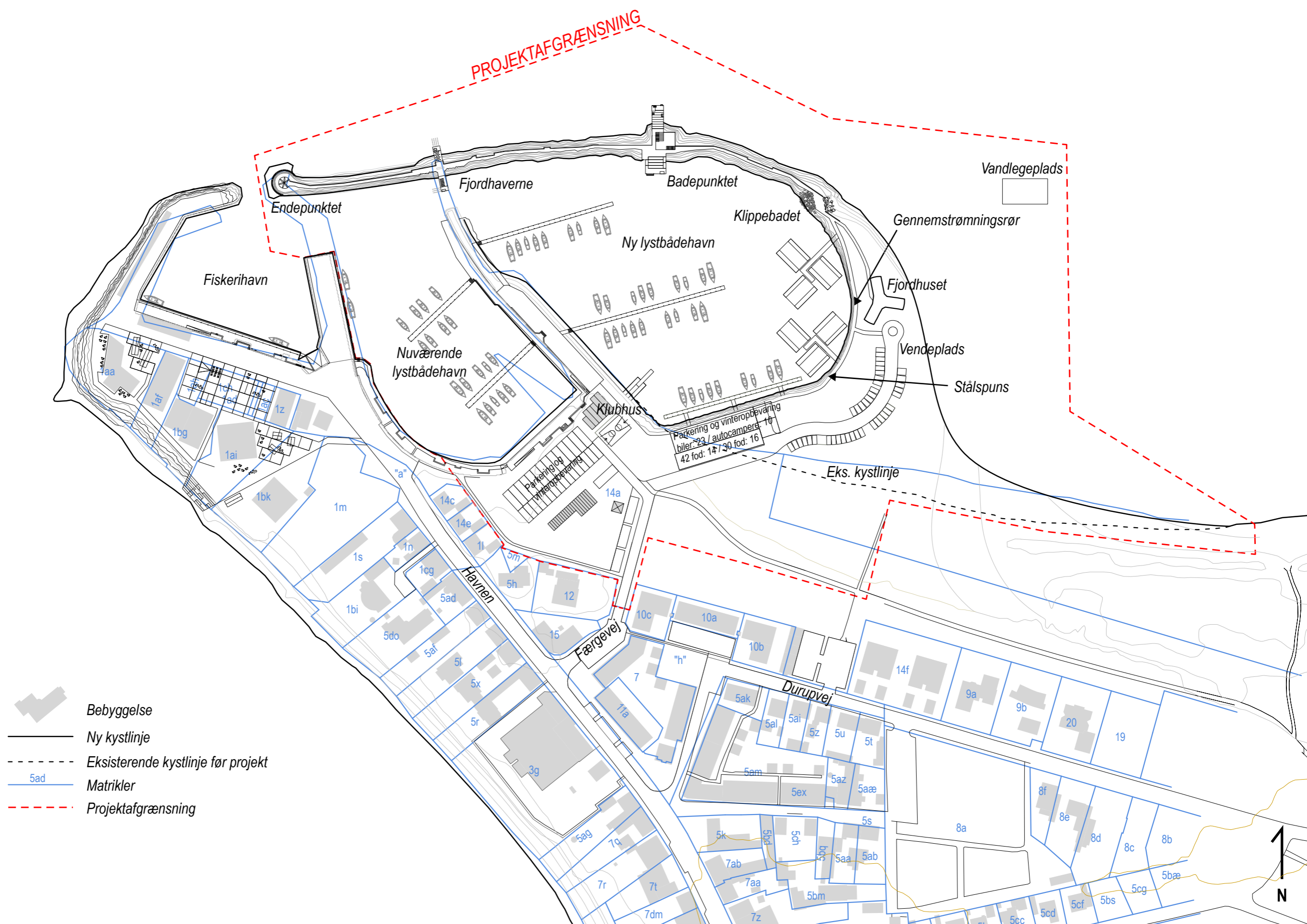

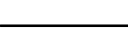
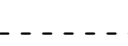




S A L L I N G



PROJEKTAFGRÆNSNING

-  Bebyggelse
-  Ny kystlinje
-  Eksisterende kystlinje før projekt
-  Matrikler
-  Projektafgrænsning



Endepunktet  
 Fjordhaverne  
 Badepunktet  
 Vandlegeplads  
 Klippebadet  
 Gennemstrømningsrør  
 Fjordhuset  
 Vendeplads  
 Stålspons  
 Ny lystbådehavn  
 Fiskerihavn  
 Nuværende lystbådehavn  
 Klubhus  
 Parkering og vinteropbevaring  
 biler: 23 / autocamper: 10  
 42 fod: 14 / 7-30 fod: 16  
 Eks. kystlinje

Nuværende lystbådehavn

Klubhus

Parkering og vinteropbevaring  
 biler: 23 / autocamper: 10  
 42 fod: 14 / 7-30 fod: 16

Eks. kystlinje

Havnen

Færgevej

Durupvej

Bebyggelse

Ny kystlinje

Eksisterende kystlinje før projekt

Matrikler

Projektafgrænsning

Fiskerihavn

Fjordhaverne

Badepunktet

Vandlegeplads

Klippebadet

Gennemstrømningsrør

Fjordhuset

Vendeplads

Stålspons

Ny lystbådehavn

1aa

1af

1ag

1ah

1ai

1aj

1ak

1al

1am

1an

1ao

1ap

1aq

1ar

1as

1at

1au

1av

1aw

1ax

1ay

1az

14c

14d

14e

14f

14g

14h

14i

14j

14k

14l

14m

14n

14o

14p

14q

14r

14s

14t

14u

14v

15

16

17

18

19

20

21

22

23

24

25

26

27

28

29

30

5ad

5ae

5af

5ag

5ah

5ai

5aj

5ak

5al

5am

5an

5ao

5ap

5aq

5ar

5as

5at

5au

5av

5do

5dp

5dq

5dr

5ds

5dt

5du

5dv

5dw

5dx

5dy

5dz

5ad

5ae

5af

5ag

5ah

5ai

5aj

5ak

5al

5am

5an

5ao

5ap

5aq

5ar

5as

5at

5au

5av

5do

5dp

5dq

5dr

5ds

5dt

5du

5dv

5dw

5dx

5dy

5dz

5ak

5al

5am

5an

5ao

5ap

5aq

5ar

5as

5at

5au

5av

5ak

5al

5am

5an

5ao

5ap

5aq

5ar

5as

5at

5au

5av

5ak

5al

5am

5an

5ao

5ap

5aq

5ar

5as

5at

5au

5av

5ak

5al

5am

5an

5ao

5ap

5aq

5ar

5as

5at

5au

5av

5ak

5al

5am

5an

5ao

5ap

5aq

5ar

5as

5at

5au

5av

5ak

5al

5am

5an

5ao

5ap

5aq

5ar

5as

5at

5au

5av

5ak

5al

5am

5an

5ao

5ap

5aq

5ar

5as

5at

5au

5av

5ak

5al

5am

5an

5ao

5ap

5aq

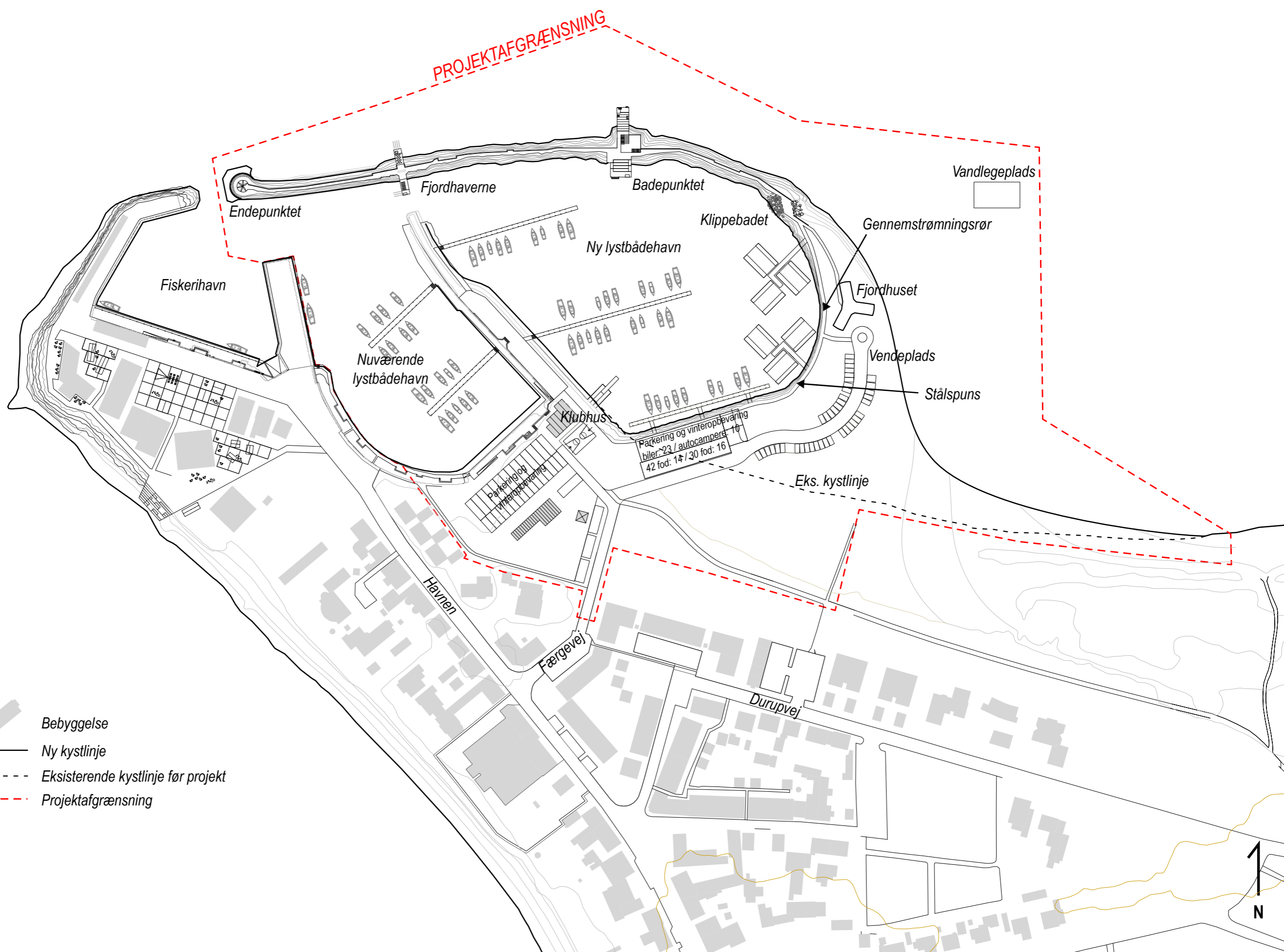
5ar



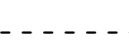

5as

5at

5au

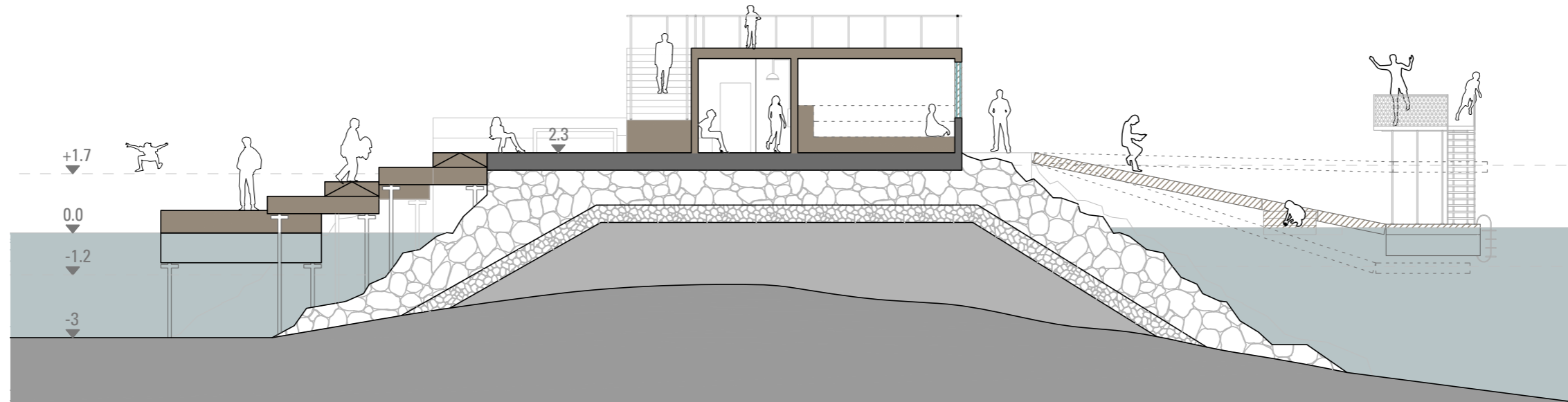
5av



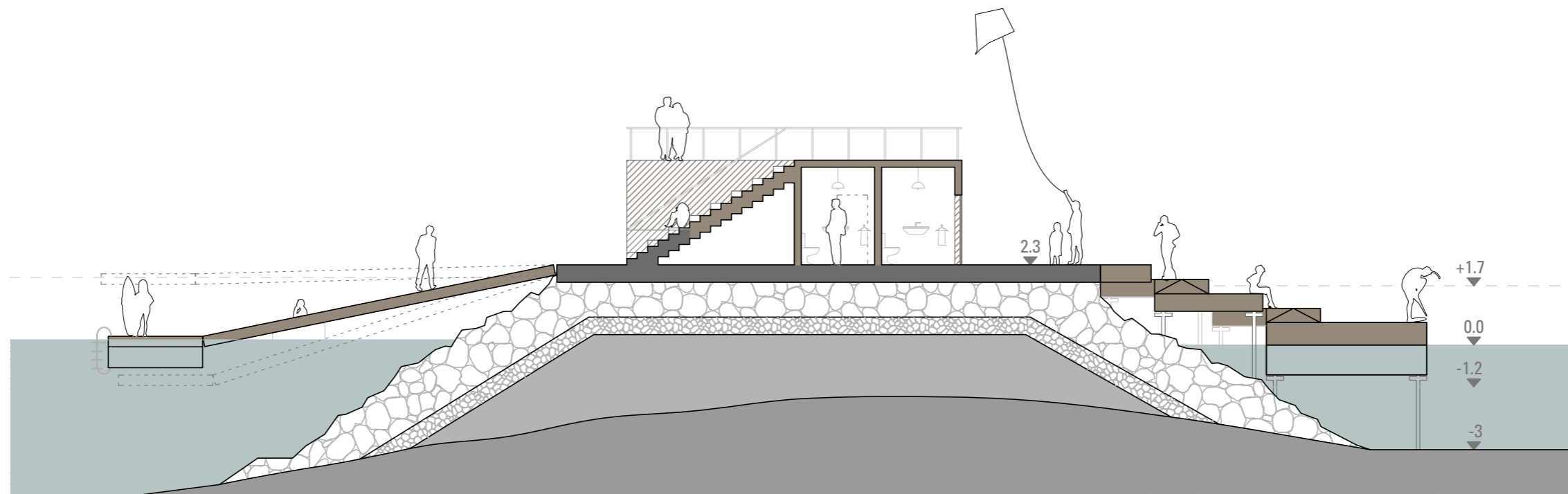
-  Bebyggelse
-  Ny kystlinje
-  Eksisterende kystlinje før projekt
-  Projektafgrænsning



# BADEPUNKTET

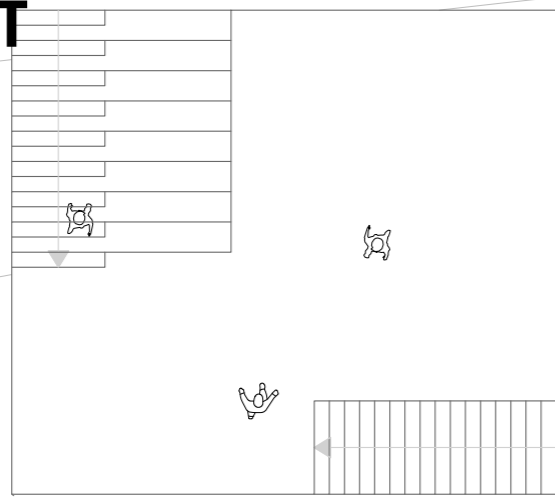


WEST FACING SECTION 1:150

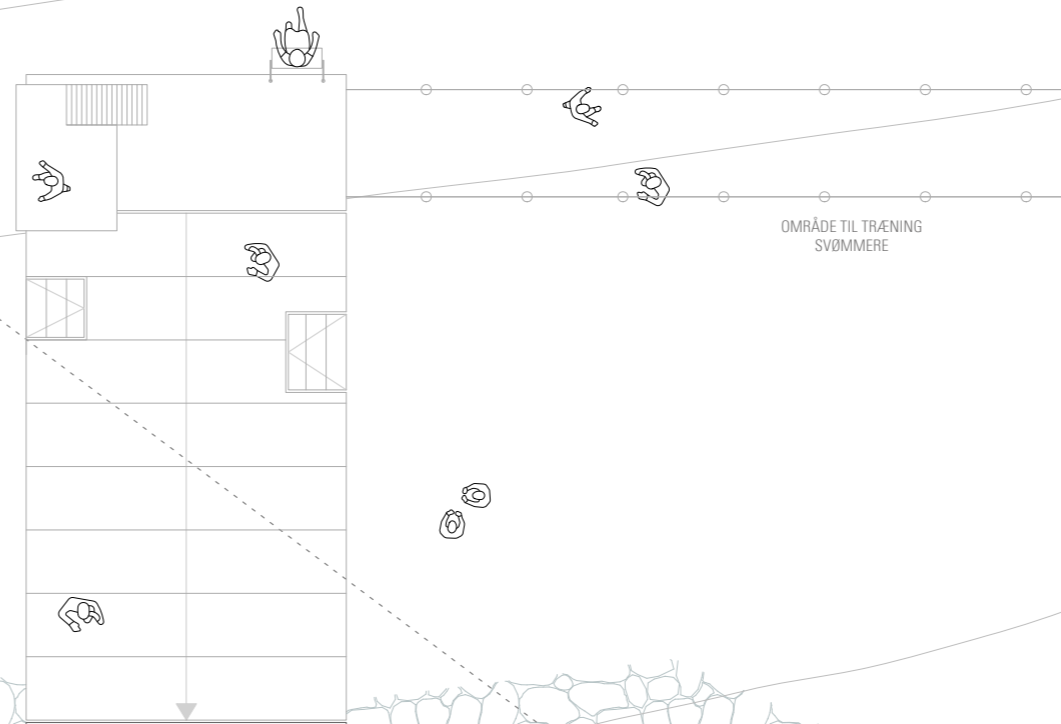


EAST FACING SECTION 1:150

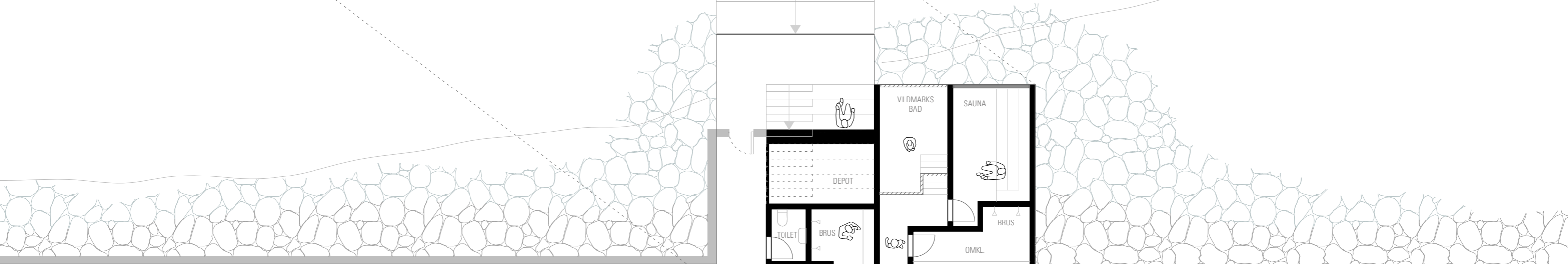
# BADEPUNKTET



Tagplan 1:150



OMRÅDE TIL TRÆNING SVØMMERE

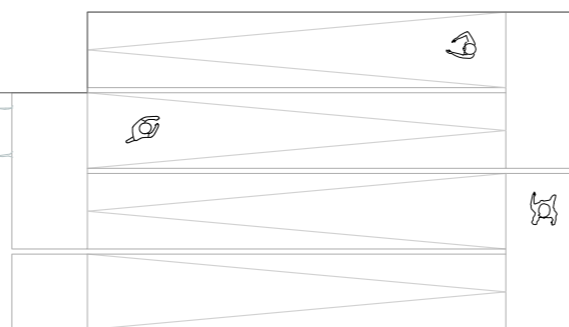


FJORDPROMENADEN

FJORDPROMENADEN

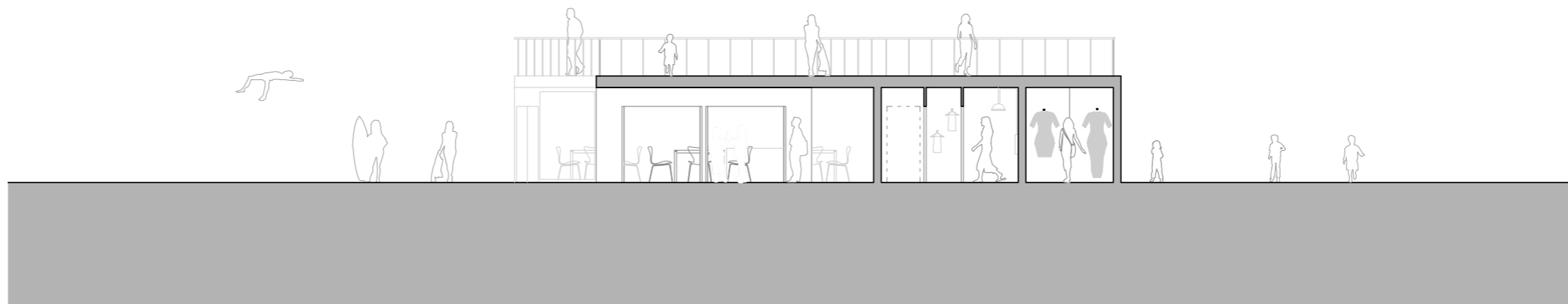
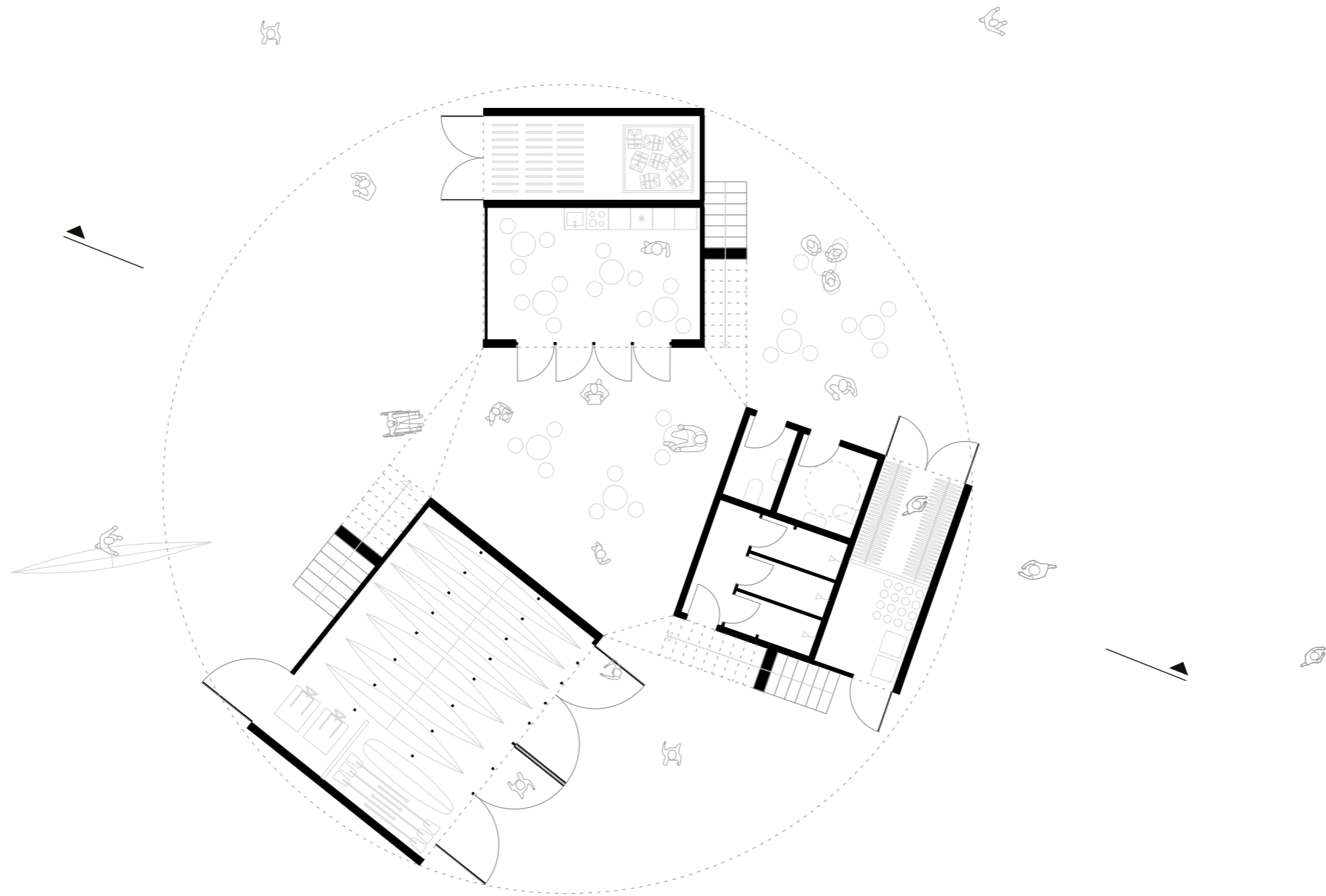


SOLPLADSEN



ØVEBASSIN TIL KAJAKTRÆNING

# FJORDHUSET





SKIVEKOMMUNE

**Samtykkeerklæring**

Skive Kommune, der er bygherre på udvidelse af Glyngøre Lystbådehavn, giver hermed samtykke til, at COWI A/S repræsenterer dem if.ht. projektansøgning til Kystdirektoratet, samt samtykke til at anlægget opføres på deres ejendom.

Dato: 27/1 - 2020

Kim Hald, Drifts- & anlægschef: Kim Hald